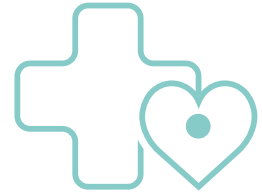


Cheat Sheet

For Clinicians



NeedleCalm™

Step 1

Remove NeedleCalm™ device from the fridge.

Step 2

Prepare the procedure as per the instructions for use.

Step 3

Place, Press and Push.

Place NeedleCalm™ on the patient, press on the NeedleCalm™ device and then push the needle in below the NeedleCalm™ device.

Needle placement and suggested hand position for:

(1) Intra-muscular injection, (2) subcutaneous injection and (3) Intravenous Cannulation.

